

Car Frame Kit

Enquiry form

Rope drive systems, acc. EN 81-20 / 50



Send

Please send the filled form

by Fax to: +49 (0) 8272 9867 - 30

by Mail to: info@berchtenbreiter-aufzug.de

Table of contents

1. [Enquiry Car Frame Kit, Rope L-Frame System - Type EZE-SR-3200](#).....2

1 Enquiry Car Frame Kit, Rope L-Frame System - Type EZE-SR-3200

acc. EN 81-20 / 50

Delivery time (Week):

Company:

Contact:

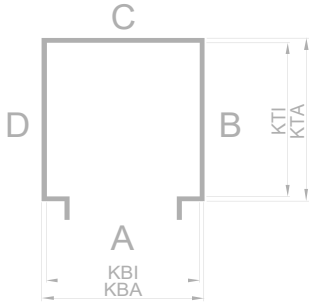
Project:

Date:

E-Mail:

Phone:

Mobil:



- Door at side A (main entrance)
- Door at side B
- Door at side C
- Door at side D
- Carframe at side B
- Carframe at side C
- Carframe at side D

- Passenger elevator
- Freight elevator

Load capacity	Q	kg	
Car weight 1)	PK	kg	
Car travel	FK	mm	
Car overtravel	RH	mm	By Berchtenb.
Car speed	v	m/s	
Car width internal	KBI	mm	
Car width external	KB	mm	
Car depth internal	KTI	mm	
Car depth external	KT	mm	
Car hight internal	KHI	mm	
Car hight external	KH	mm	
Car floor 2)	KU	mm	
Car roof 3)	KD	mm	
Shaft width internal	SB	mm	
Shaft depth internal	ST	mm	
Shaft pit	SG	mm	
Shaft head	SK	mm	
1st bracket spacing (pit)	B1	mm	
Max. bracket spacing	B2	mm	
1) Weight without frame, but incl. door(s) and travelling cable			
2) If not otherwise specified	108	mm	
3) If not otherwise specified	76	mm	
Dist. between guides	STM	mm	
Dist. between guides rail axis and shaft wall	D	mm	
Dist. between guides rail axis and outer car wall	F	mm	

Content of supply

Ropes

- With ropes
- Without ropes

Guide rails

- T 125 / 82 / 16
- Without guide rails

Guide rail fixings

- With guide rail fixings
- Without guide rail fixings

Counterweight rails

- T 70 / 65 / 9
- T 90 / 75 / 16
- Without guide rails

Guide rail brackets

- With guide rail brackets
- Without guide rail brackets

Type of car frame guides

- Sliding guides
- Roller guides, also for the counterweight

Safety gear tripping system

- Overspeed governor type PFB
- Overspeed governor supplied by customer

Remote control

- 230 V/AC
- Without remote control

Important

The car frame kit is always equipped with an overspeed governor and a progressive safety gear.

2 Enquiry Car Frame Kit, Rope Central Ram System - Type ZZE-S

acc. EN 81-20 / 50

Delivery time (Week):

Company:

Contact:

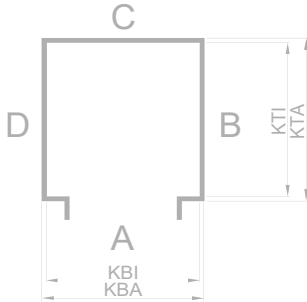
Project:

Date:

E-Mail:

Phone:

Mobil:



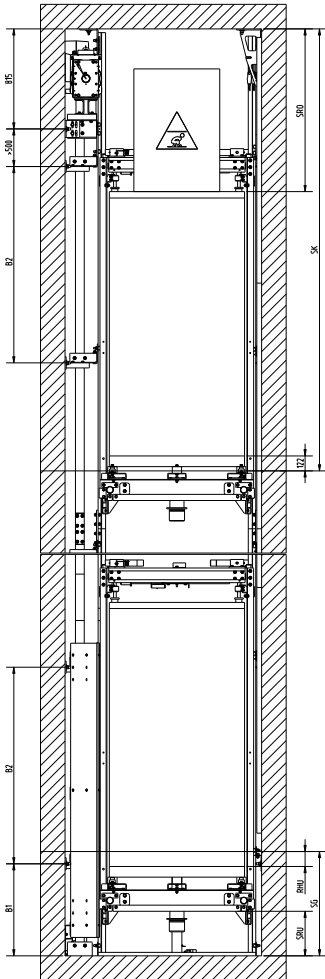
Door at side A (main entrance)

Engine at side B

Engine at side D

Passenger elevator

Freight elevator



Load capacity	Q	ka
Car weight 1)	PK	kg
Car travel	FK	mm
Car overtravel	RH	mm
Car speed 2)	v	m/s
Car width internal	KBI	mm
Car width external	KB	mm
Car depth internal	KTI	mm
Car depth external	KT	mm
Car hight internal	KHI	mm
Car hight external	KH	mm
Car floor 3)	KU	mm
Car roof 4)	KD	mm
Shaft width internal	SB	mm
Shaft depth internal	ST	mm
Shaft pit	SG	mm
Shaft head	SK	mm
1st bracket spacing (pit)	B1	mm
Max. bracket spacing	B2	mm

1) Weight without frame, but incl.doors and travelling cable

2) Car speed up to 1,6 m/s possible (in the case of car speed above 1m/s the shaft dimensions will increase. These dimensions can be requested from our sales department)

3) If not otherwise specified: 100 mm

4) If not otherwise specified: 50 mm

5) Distance between guide rails and distanve to shaft wall will be set by Berchtenbreiter GmbH

Dist. between guides	STM	mm	by Berchtenb.
Dist. Engine side 5)	D	mm	by Berchtenb.
Dist side wo. engine 5)	F	mm	by Bberchtenb.

Content of supply

Ropes

- With ropes
- Without ropes

Guide rails

- With guide rails
- Without guide rails

Guide rail brackets

- With guide rail brackets
- Without guide rail brackets

Type of car frame guides

- Sliding guides
- Roller guides, but counterweight with sliding guides
- Roller guides, also for the counterweight

Safety gear tripping system

- Overspeed governor
- Overspeed governor supplied by customer

Remote control

- 24 V/DC
- 230 V/AC
- Without remote control

Leak oil bottle in the base unit

- With leak oil bottle
- Without leak oil bottle

Important

The car frame kit is always equipped with an overspeed governor and a progressive safety gear or an electronical progressive safety gear.

Delivery Address	<input type="radio"/> Sydney	<input type="radio"/> Melbourne	<input type="radio"/> Brisbane
Counterweight safety gear	<input type="radio"/> No	<input type="radio"/> Yes	
Door Type:	<input type="radio"/> Sematic		
	<input type="radio"/> Meiller		
	<input type="radio"/> Fermator		
	<input type="radio"/> LCM		
	<input type="radio"/> other		
Door Operator Type:	<input type="radio"/> Sematic 2000		
	<input type="radio"/> Meiller (Siemens AT40)		
	<input type="radio"/> Fermator VVVF4		
	<input type="radio"/> Wittur AMD		
	<input type="radio"/> other		
Sills:	<input type="radio"/> Standard Aluminium		
	<input type="radio"/> Stainless Steel		
	<input type="radio"/> other		
Car weight incl. Car door(s) without frame weight			
Floor frame:	<input type="radio"/> Standard	<input type="radio"/> Special	
Steel work painted:	<input type="radio"/> Black	<input type="radio"/> other	
Pit steel work treatment:	<input type="radio"/> Standard	<input type="radio"/> Hot dipped galvanized	<input type="radio"/> other
Counterweight painted:	<input type="radio"/> Yellow	<input type="radio"/> other	
Controller cabinet:	<input type="radio"/> Stainless Steel	<input type="radio"/> other	Located:
Key receptacle in cabin door?	<input type="radio"/> Yes	<input type="radio"/> No	
Type of indicator (CAR):	<input type="radio"/> DOT MATRIX 40	<input type="radio"/> DOT MATRIX 64	<input type="radio"/> TFT-110
Quantity of car indicators:		/ Lift	(by LIFTRONIC)
Type of indicator (LDG):	<input type="radio"/> DOT MATRIX 40	<input type="radio"/> DOT MATRIX 64	<input type="radio"/> TFT-110 <input type="radio"/> ADM only
Quantity of landing indicators:			(by LIFTRONIC)
Sam voice unit:		/ Lift	(by LIFTRONIC)
FPM for auxillary COP		+ Leads	(by LIFTRONIC)
Positioning system	<input type="radio"/> LIK	<input type="radio"/> USP	<input type="radio"/> LIMAX <input type="radio"/> other
UPS provision for auto lowering	<input type="radio"/> Yes	<input type="radio"/> No	
Control	<input type="radio"/> Simplex	<input type="radio"/> Group	
Motor van required	<input type="radio"/> Yes	<input type="radio"/> No	
Guide rail length	<input type="radio"/> 5m (standard)	<input type="radio"/> 2,5m (special)	
NEWLIFT „ETS“ (v > 1,0 m/s)	<input type="radio"/> Yes	<input type="radio"/> No	
NEWLIFT „PAM“ (Remote monitoring)	<input type="radio"/> Yes	<input type="radio"/> No	
NEWLIFT „RIO-2“ (I/O outputs)	<input type="radio"/> Yes	<input type="radio"/> No	
NEWLIFT „GSR“ (QLD Rail elevation)	<input type="radio"/> Yes	<input type="radio"/> No	
BACnet Gateway (NSW rem. monitoring)	<input type="radio"/> Yes	<input type="radio"/> No	
Add. LON cables(2x9 m long with 2x inline connectors)	<input type="radio"/> Yes	<input type="radio"/> No	

info@berchtenbreiter-aufzug.de

www.berchtenbreiter-aufzug.de

© 2024 by Berchtenbreiter Aufzugtechnik, D-86637 Rieblingen

All rights reserved

Data is provided for the purpose of product description only, and must not be considered as warranted characteristics in the legal sense. The information does not relieve users from the duty of conducting their own evaluations and tests. Because the products are subject to continual improvement, we reserve the right to amend the product specifications contained in this catalogue.